

Typo Positive: When Collection Doesn't Get You What You Need



HELLO!

I am Renee

.

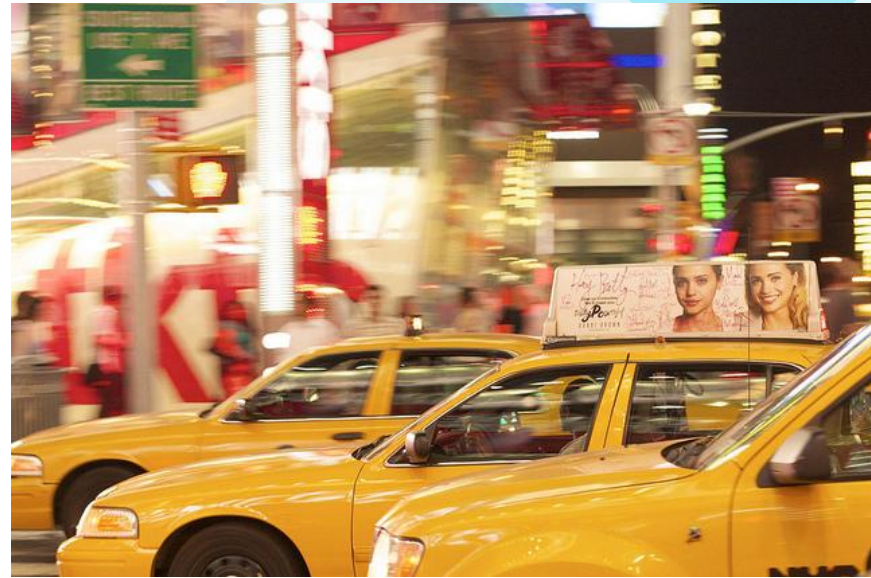
You can find me at @DataRenee



HELLO AGAIN!

I live here in NYC

I am a Business Intelligence
Analyst



What is Data?

1

A representation of some aspect of the world





What is Data?

- Pieces of information, with a format
- Facts used for making decisions
- Information stored in and/or used by a computer



2

What is Good Data?

Fit for its intended uses in operations,
planning, decision making





Why do we want good data?

- Planning
- Operations
- Look smart
- Save money
- Make decisions
- Complete transactions



What can we assess to check if the data might work for the intended purpose?

3





The Six Primary Dimensions for Data Quality Assessment

- Completeness
- Uniqueness
- Timeliness
- Validity
- Accuracy
- Consistency

PDF from UK [International Data Management Association](#)





LET'S REVIEW THESE CONCEPTS

Completeness

Are there gaps between expected data and the data we have?

Do we have enough data for the task at hand?

Validity

Are the format, syntax, and type correct?

Could it be accurate?

Is the data in range?

Are there unexpected NULL values?

Uniqueness

Are there duplicates in the dataset?

Accuracy

Have we stored the correct value?

Are the units of measure appropriate?

Timeliness

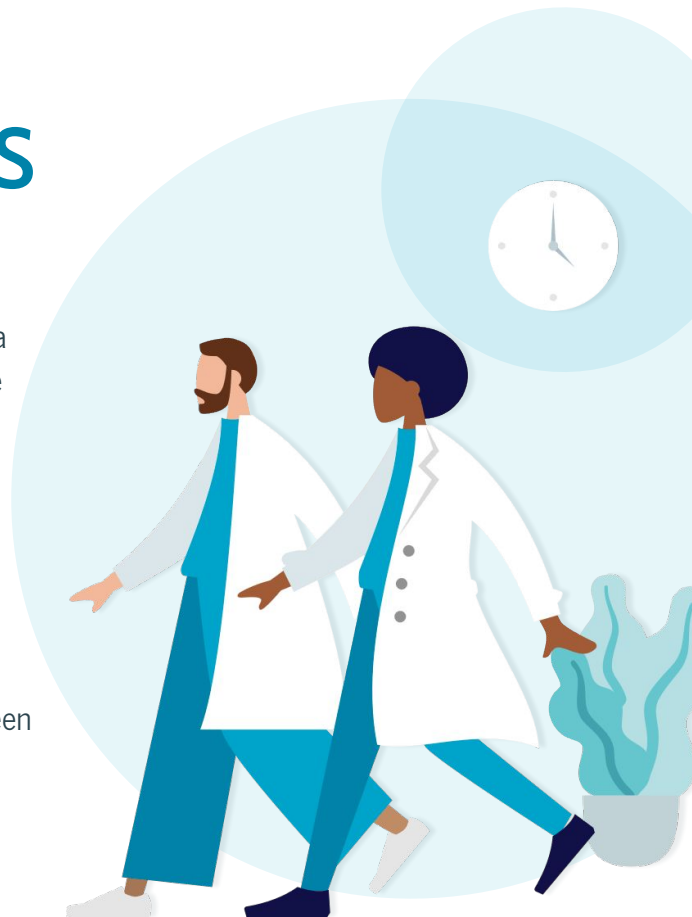
Is there more recent data that is appropriate to the task?

Is the data accessible quickly enough?

Consistency

Are there conflicts between data sources?

Does the database only change data in expected ways?





TWO KINDS OF DATA

Quantitative

Easily expressed as a number

- Distance
- Weight
- Count
- Time

Qualitative

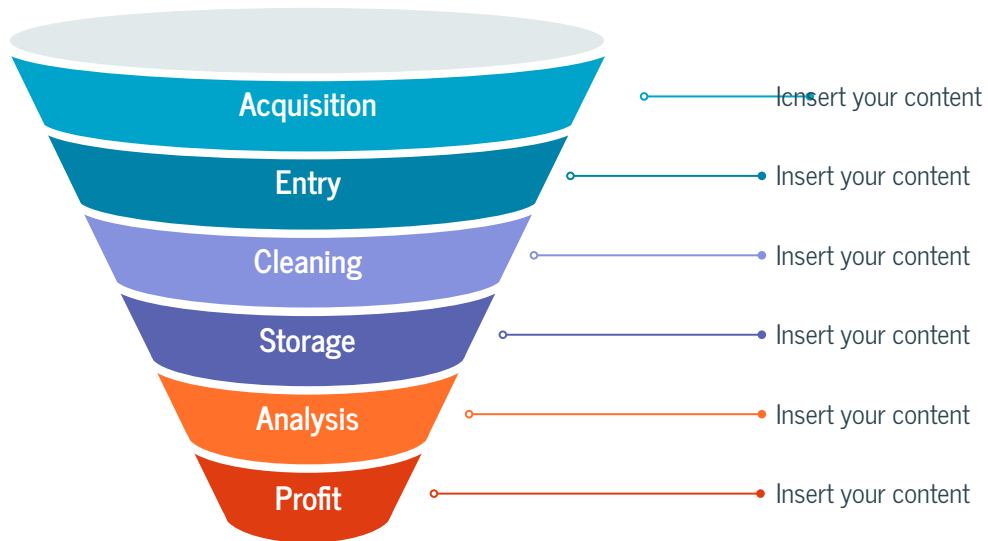
Not easily expressed as a number

- Color
- Mood
- Reason
- Opinion





DATA FUNNEL



4

How Do We Get Data?





Collecting Data

Sensors

Questionnaires

Surveys

Interviews

Forms

Scales

Observations

Focus groups

Oral histories

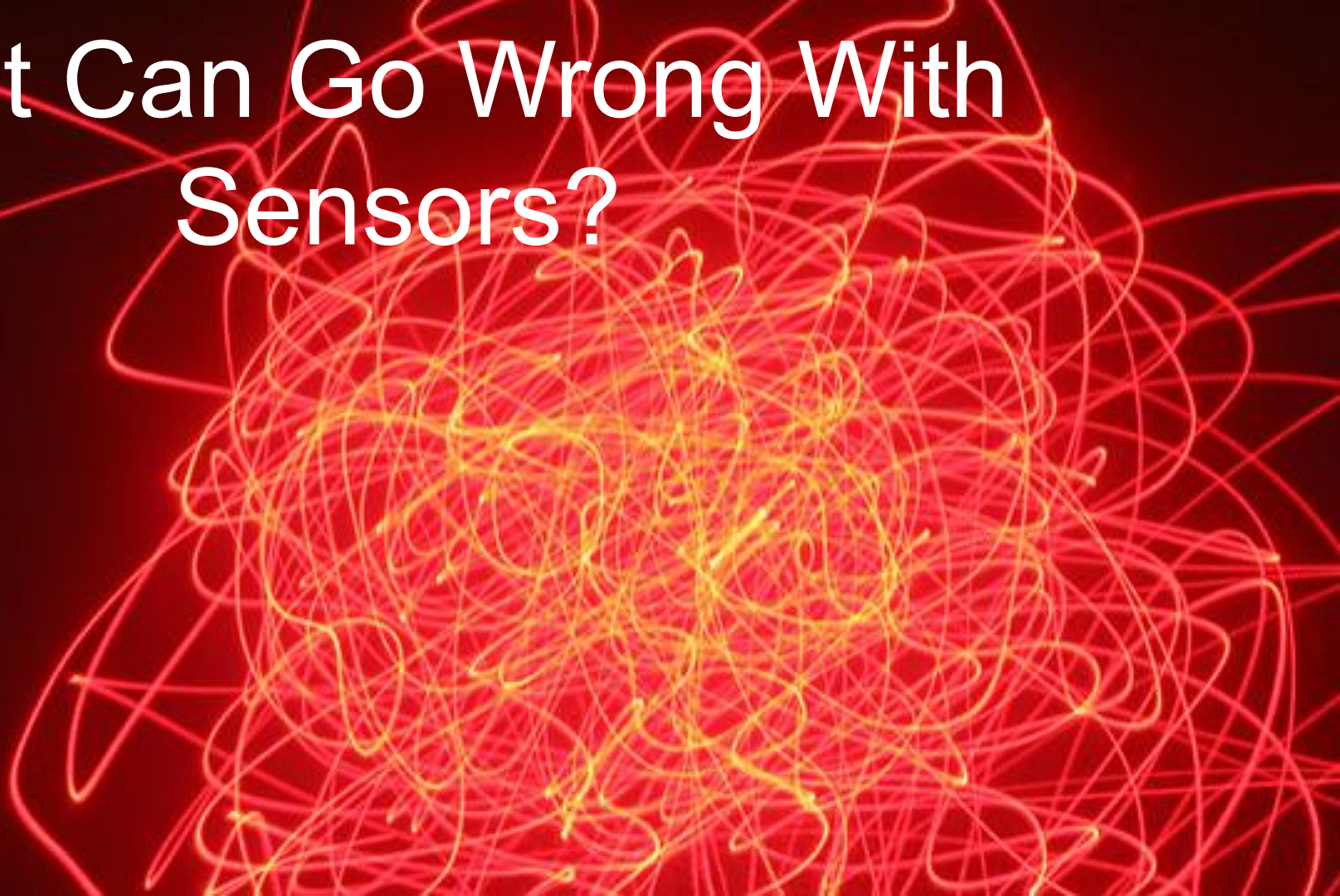
Archives

Clocks

Measuring sticks



What Can Go Wrong With Sensors?





SENSORS

Corrosion

Condensation (pressure drift)

Calibration

Time zone

Mounting





SENSORS

Corrosion  **Maintain the environment and machine**

Condensation (pressure drift)  **Maintain the environment**

Calibration

Time zone

Mounting





SENSORS

Corrosion

Condensation (pressure drift)

Calibration  **Regular Maintenance**

Time zone

Mounting  **Regular Maintenance**





SENSORS

Corrosion

Condensation (pressure drift)

Calibration

Time zone  **Column Definition**

Mounting





SENSORS

Printed Circuit Board

Cybersecurity

Fuel Quality (O₂)

Maintenance





SENSORS

Printed Circuit Board  Avoid 90 degree angles

Cybersecurity

Fuel Quality (O2)

Maintenance





SENSORS

Printed Circuit Board

Cybersecurity  Invest in testing

Fuel Quality (O₂)

Maintenance





SENSORS

Printed Circuit Board

Cybersecurity

Fuel Quality (O₂)  Use appropriate fuel

Maintenance





SENSORS

Printed Circuit Board

Cybersecurity

Fuel Quality (O₂)

Maintenance  Regular Maintenance








What Can Go Wrong With GPS?






GPS

- Canyons  **Sensor on top of vehicle**
- Cold starts 
- Not enough satellites 
- Poor hardware 
- Low battery 





GPS

- Canyons
- Cold starts  **Keep in use**
- Not enough satellites
- Poor hardware
- Low battery





GPS

- Canyons
- Cold starts
- Not enough satellites
- Poor hardware
- Low battery




Alternate collection






GPS

- Canyons
- Cold starts
- Not enough satellites
- Poor hardware  **Invest in equipment**
- Low battery





GPS

- Canyons
- Cold starts
- Not enough satellites
- Poor hardware
- Low battery  Maintenance





GPS

Multipath signals / Bounce  Avoid urban canyons,
sensor to top of vehicle

Software issues

Atmospheric conditions





GPS

Multipath signals / Bounce

Software issues  Upgrade Software

Atmospheric conditions





GPS

Multipath signals / Bounce

Software issues

Atmospheric conditions  **Accept**

Decreased collection frequency



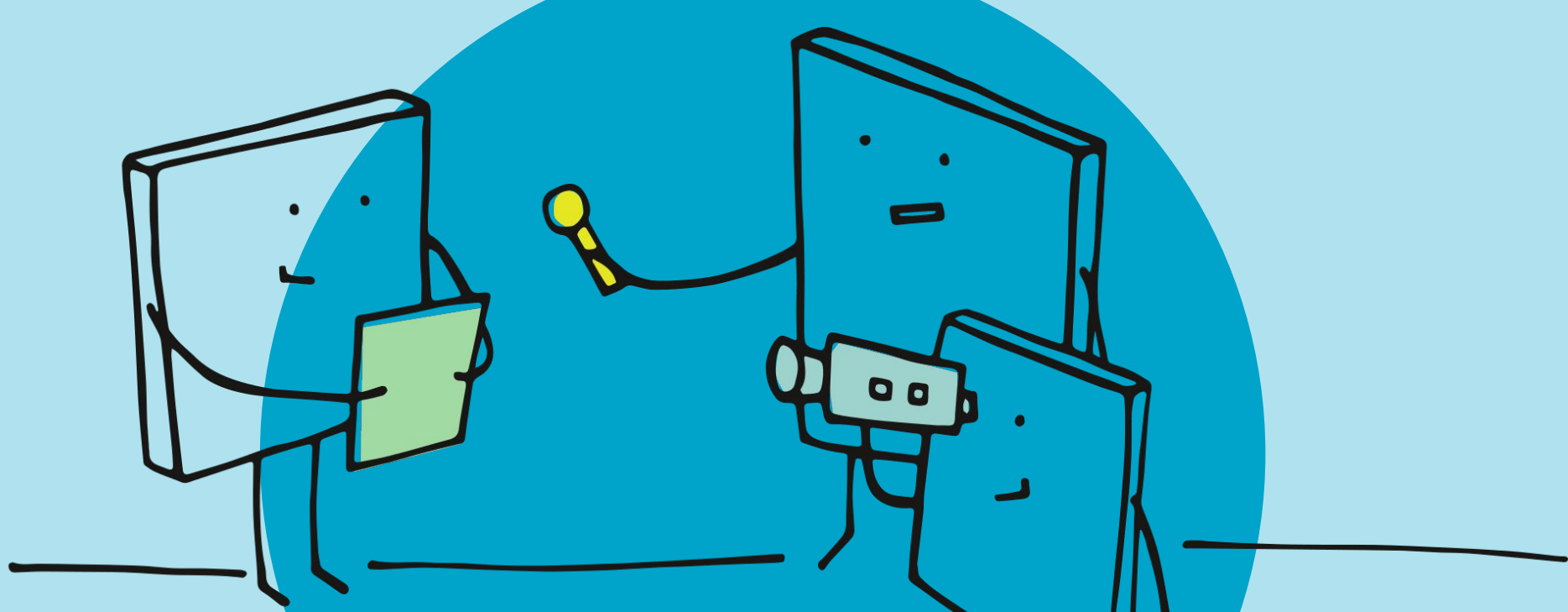
What Can Go Wrong With Clocks?







We Literally Do Not Have Time For That



What Could Go Wrong
With Asking People Things?



Questionnaires, Surveys, Focus Groups, Oral Histories, and Interviews

Choosing subjects

Cost

Contacting respondents

Keeping respondents engaged

Not flexible





Questionnaires, Surveys, Focus Groups, Oral Histories, and Interviews

Choosing subjects  Acquire program data

Cost

Contacting Respondents

Keeping Respondents engaged

Not flexible





Questionnaires, Surveys, Focus Groups, Oral Histories, and Interviews

Choosing subjects

Cost  **Assess hiring a firm vs making your own**

Contacting Respondents

Keeping Respondents engaged

Not flexible





Questionnaires, Surveys, Focus Groups, Oral Histories, and Interviews

Choosing subjects

Cost

Contacting Respondents  Rely on site visitors

Keeping Respondents engaged

Not flexible





Interestingly, the first incidence of speeding flattens out at the 8 minute mark – this appears to be the level where impatience starts to set in





Questionnaires, Surveys, Focus Groups, Oral Histories, and Interviews

Choosing subjects

Cost

Contacting Respondents

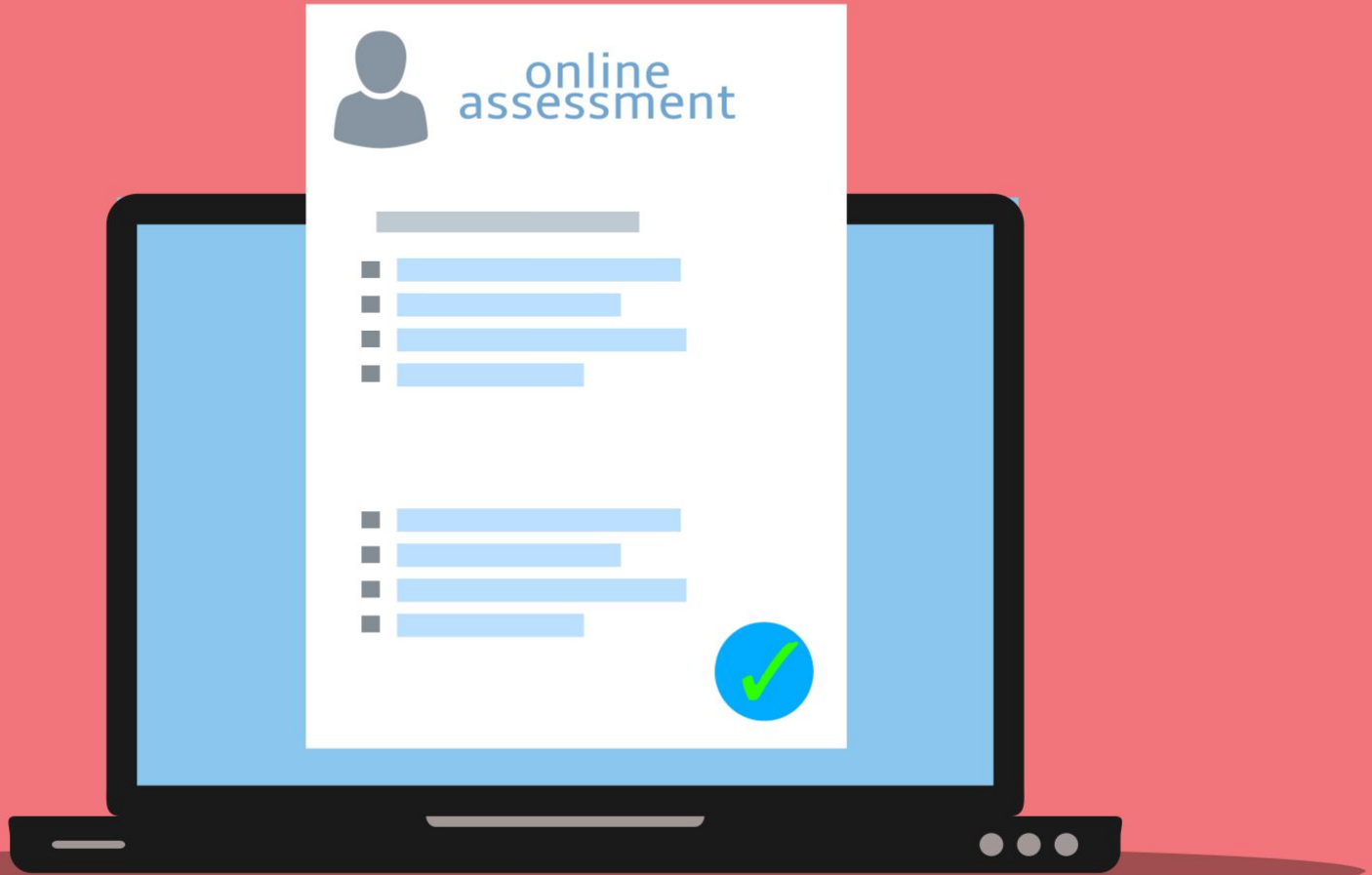
Keeping Respondents engaged

Not flexible  Focus Groups, Oral

Histories, Interviews are better



What
Could
Go
Wrong
With
Forms?





Questionnaires, Surveys, Focus Groups, Oral Histories, and Interviews

Handwriting

Data entry delay

Electronic form settings

Access to technology





Questionnaires, Surveys, Focus Groups, Oral Histories, and Interviews

Handwriting  **Fillable PDF (even on mobile)**

Data entry delay

Electronic form settings

Access to technology





Questionnaires, Surveys, Focus Groups, Oral Histories, and Interviews

Handwriting

Data entry delay  Provide secure webforms

Electronic form settings

Access to technology





Questionnaires, Surveys, Focus Groups, Oral Histories, and Interviews

Handwriting

Data entry delay

Electronic form settings

 **DOUBLE CHECK THEM**

Access to technology





Questionnaires, Surveys, Focus Groups, Oral Histories, and Interviews

Handwriting

Data entry delay

Electronic form settings

Access to technology

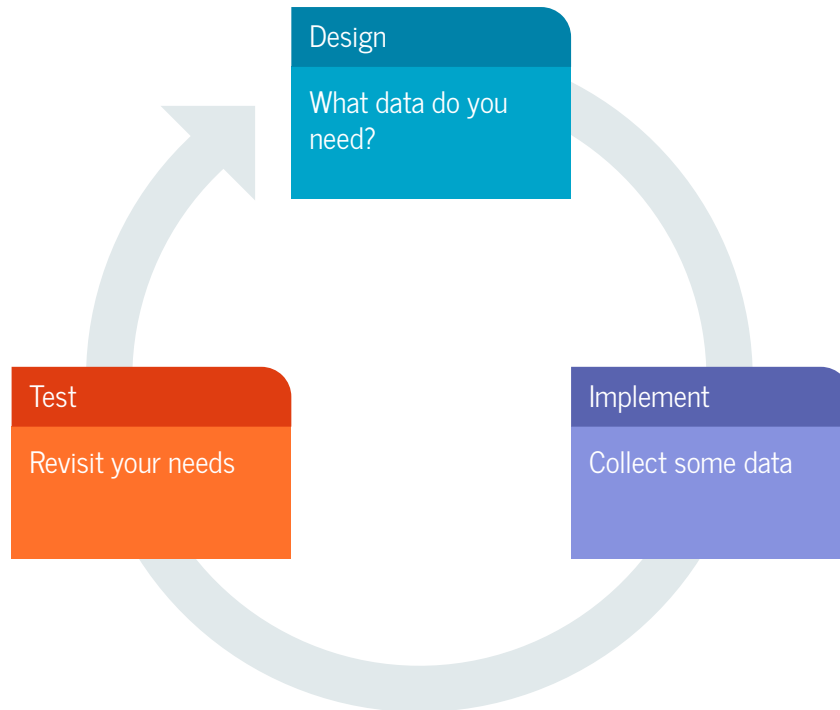


Provide technology in office





ITERATE ON COLLECTION PROCESS



THANKS!

What questions do you have?

You can find me at:

- @DataRenee





CREDITS

Special thanks to all the people who made and released these awesome resources for free:

- Presentation template by [SlidesCarnival](#)
- Illustrations by [Pablo Stanley](#)
- Photographs by [Unsplash](#)

